



Installing the USB Driver for the Genave RXC Equipment

Before attaching the USB cable you will need the driver program at hand. This will be on your original ComStarG disk. It can also be downloaded from our website at http://www.genave.com/tech_support.htm. You will need the driver files named RXC-10C4-EA60-A.

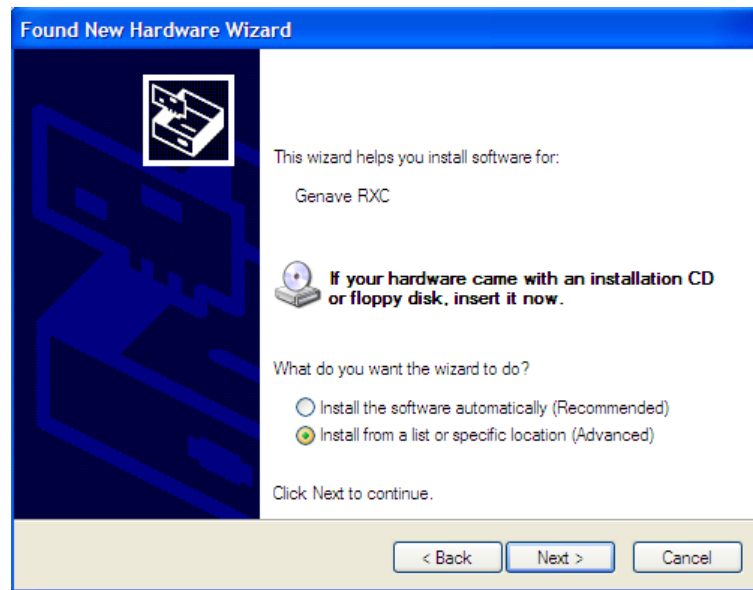
Files downloaded from the website will be in a self-extracting .zip format. You should extract the files to the default location of "C:\Genave\RXC-USBDriver\RXC-10C4-EA60-A".

Once your ready, attach a USB cable between your computer and the Genave product. Your computer will automatically detect the RXC and begin the process to load the USB driver program and complete the connection.

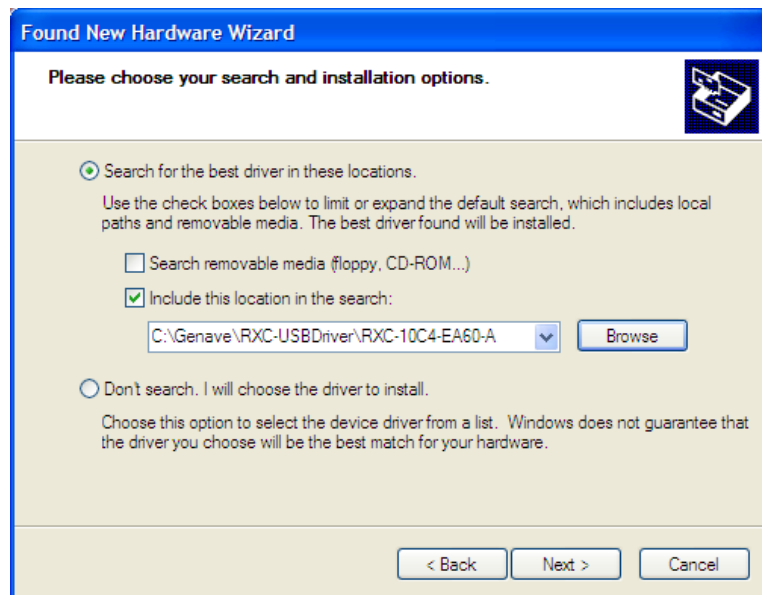
You will see the "Found New Hardware Wizard"



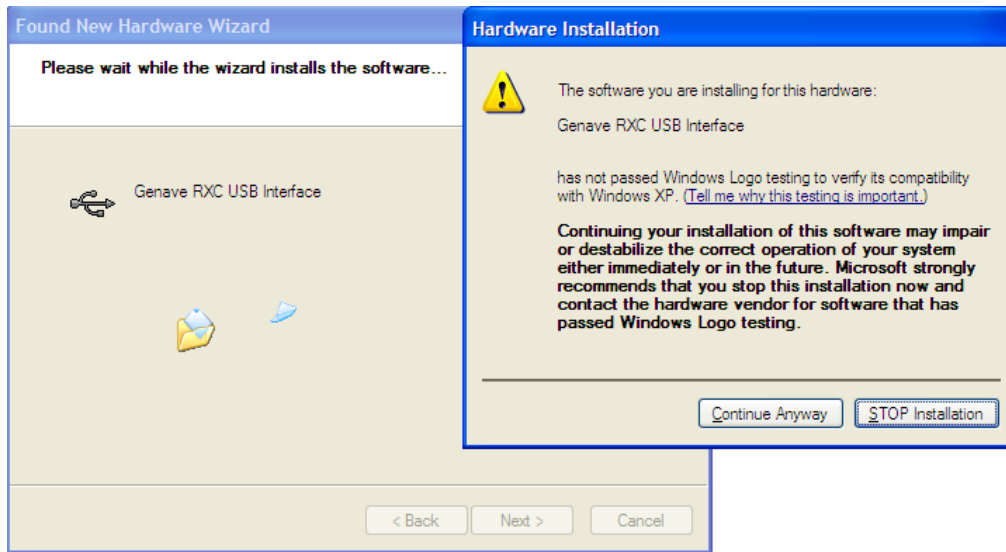
Check "No, not this time", then "Next >" to continue.



Click “Install from a list or specific location (Advanced)”, then “Next >”.

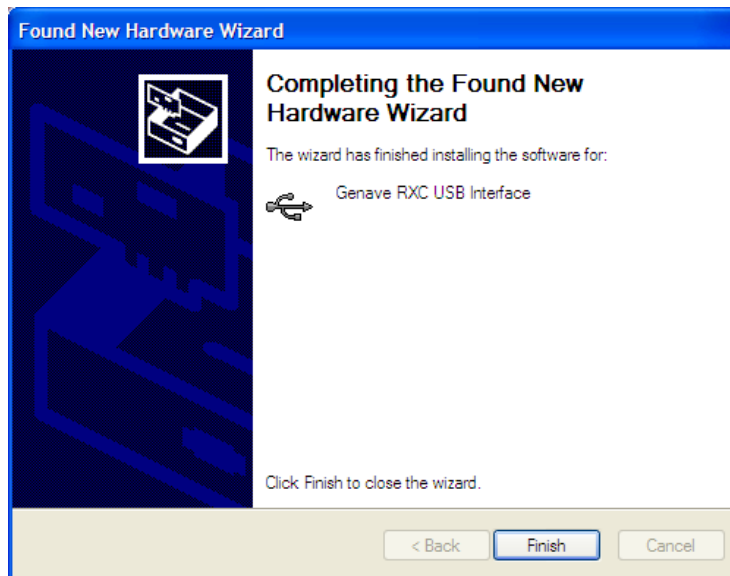


Check the boxes as shown above, then enter the driver location. The driver files may exist in a different directory or drive on your computer so the information shown above may not match the location on your computer. While the path or drive may be different, the filename RXC-10C4-EA60-A will be the same. Click “Next > “ to continue



Your computer will begin loading the driver. It will then pause with the above message about Microsoft testing. Click “Continue Anyway” and driver installation will continue.

After the first part of the driver has been installed you will see the success message.



Click on “Finish”

THIS IS VERY IMPORTANT! You are not done. The driver must load a second time.

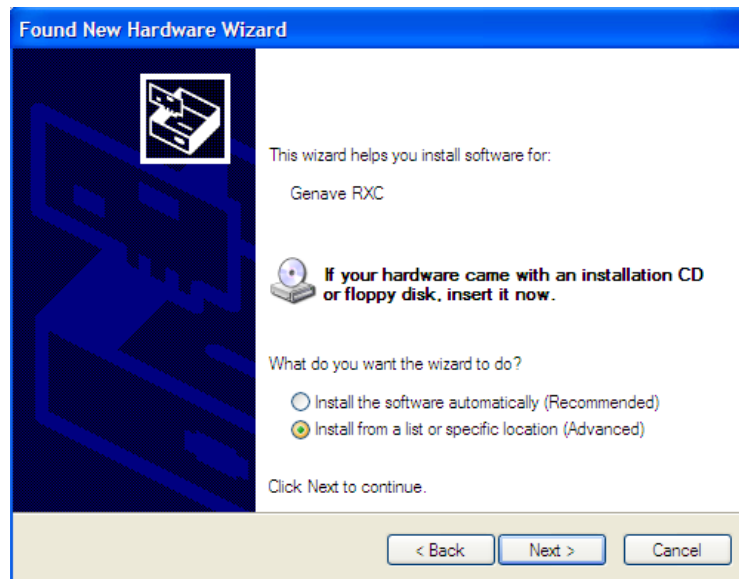
Your computer will recognize the RXC again and go through the driver wizard a second time.

This must be completed by finishing this procedure.

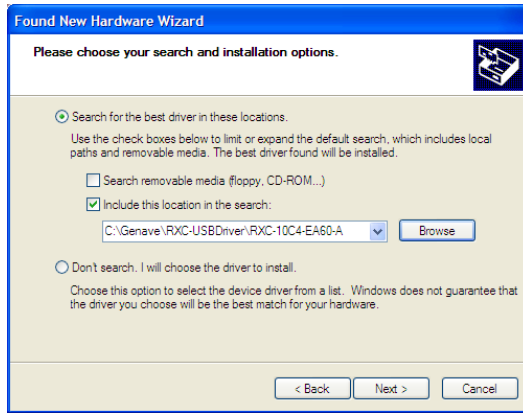
You will again see the “Found New Hardware Wizard”



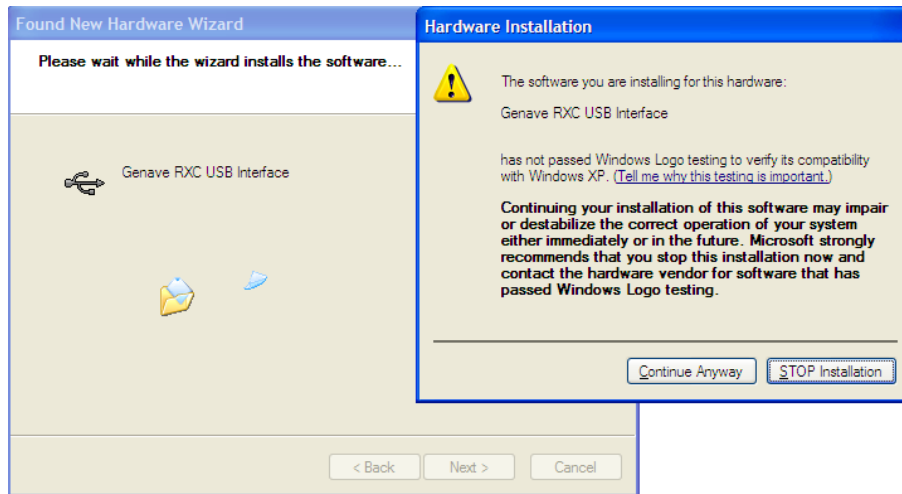
Again check on “No, not this time”, then click “Next >” to continue.



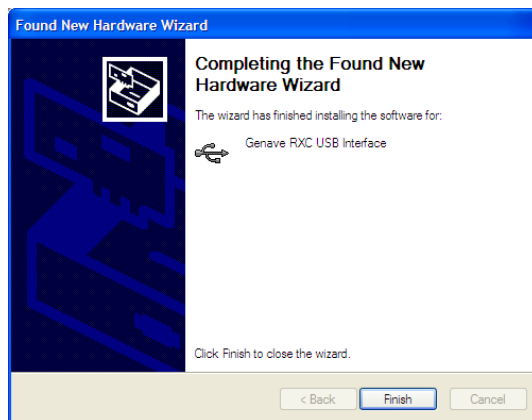
Click “Install from a list or specific location (Advanced)”, then “Next >”.



Check the boxes as shown. The driver location will be the same as the first time using the driver installation wizard. Click “Next >” to continue.



Click on “Continue Anyway” to dismiss the above message.



You will see the success message. Click on “Finish”. The driver installation is complete.

After starting the ComStarG Software to program the RXC. Click on Preferences to change to the new USB connection. Microsoft Windows will display your new USB port as a serial connection. Usually the connection is serial port number 5 or above. If you have your RXC attached and powered up prior to starting the ComStarG software, it is easier to locate the USB connection.