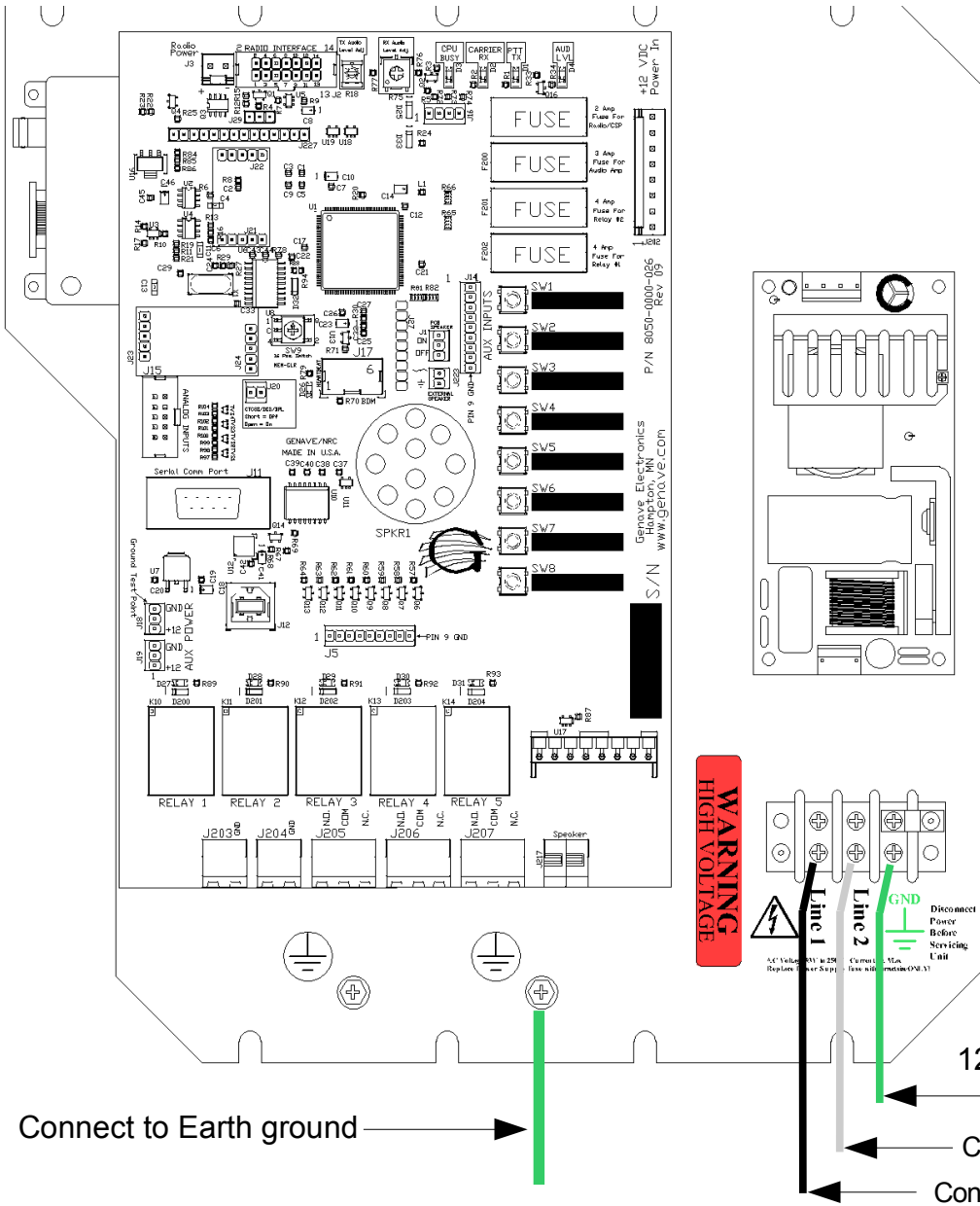
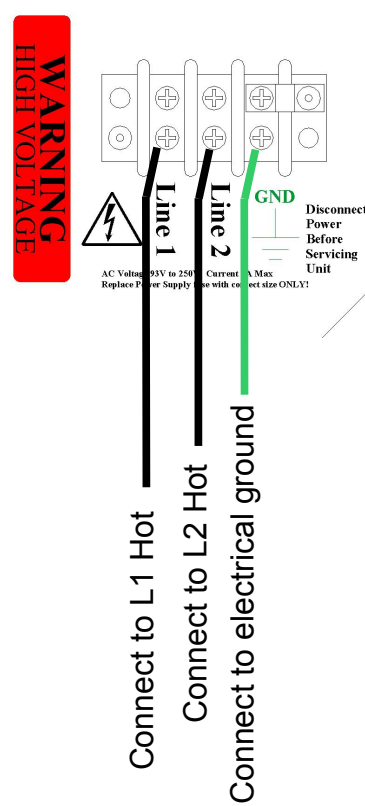


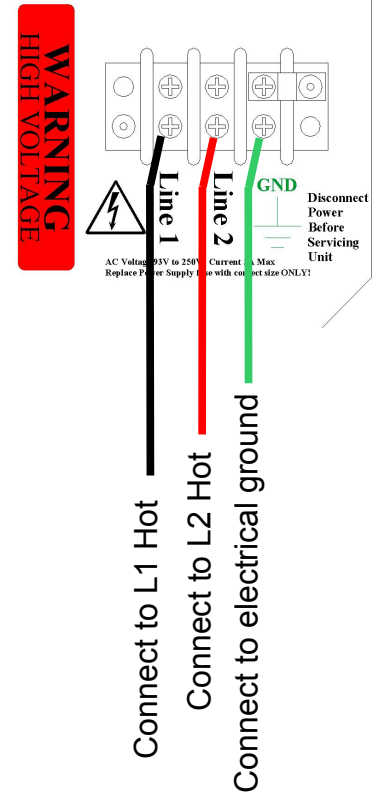
AC power connection to RXC-2000 & RXC-2080



240 VAC single phase wiring



208/240 VAC three phase wiring



Never Exceed 250VAC into the power supply

120 VAC single Phase Wiring

- Connect wire to electrical ground
- Connect wire to electrical Neutral
- Connect wire to electrical Hot = 120VAC

Warnings:

- Turn off ALL power before working on any electrical equipment.
- Follow all applicable electrical and safety rules and regulations.
- This is only an example. Your contactor and wiring may differ.
- Electrical work should only be performed by licensed and qualified personnel.